

Broadcaster

Glenview Community Church

December 16, 2009



As My Ministry Draws to a Close

Allison and Bob Vevang's confirmation class invited me to join them for breakfast to talk about my work at GCC. The muffins were delicious. The discussion was engaging. Our time together began with one of the confirmation students reading my October Executive Board report, outlining my time with GCC through the end of the year.

I talked briefly about my ministry here and then these inquiring teenagers asked questions. I won't remember all of the questions. Let me try to capture some of them. What does it mean to be ordained? What attracted you to GCC? What have you most enjoyed about being here? When did you know you were going to be a minister? Were you surprised by the vote at the congregational meeting or did you have some sense that it would happen that way? Is it difficult to be here now? When you leave, will you be glad that you were here?

What an amazing array of questions. What a wonderful conversation.

I continue to talk with members and friends of GCC about what lies ahead for the church and for me. I am glad to have these conversations. A few weeks ago a member who has been away for a while greeted me with her regrets that I would be leaving and then asked about my sabbatical. She was interested in what I did while I was away. We spent some time looking at the sabbatical highlights and talking about what a renewing experience it was.

I am updating my ministerial profile which will be a key document in my search for a new call. Prior to my call to GCC, I served as the pastor of a church in Chicago. I will explore opportunities to serve as a sole pastor or as senior minister of a multi-staff church.

Several people have commented on the "Ordained Minister's Code" that was included in a recent Broadcaster. There is a companion piece from the United Church of Christ, which I have attached. It is called

"The Church in Relation to its Pastor" and covers ministry, partnership, ethics, and commitments. Both of these documents were included with the Letter of Call that GCC provided me when I began my ministry here. They are helpful documents as churches and ministers live out their calls to ministry.

I will be here through the end of the year. On December 27th, the morning worship service at 9:30 will incorporate the liturgy that formally ends my authorized ministry. Rev. Gloria Hopewell, a representative of the Chicago Metropolitan Association will participate in that service, just as representatives of the wider church participated in the service of installation when I came to GCC over six years ago. I'll see you in church.

Sally

THE POINSETTIA GIVING TIME HAS COME...

Our Sanctuary will be beautifully filled with live color for our Christmas services. As usual, we will take them to members and friends of GCC who are not able to attend our Church over the season. If you would like to take the opportunity to deliver a poinsettia, or more, to these homes, please call Mary Ellen Johnson (847)998-1363. Plants can be taken for delivery after the Christmas Eve service or picked up on December 26th. Sharing a part of our Church at this time provides a blessing to those who give and those who receive. Your offer will be greatly appreciated. Pick up poinsettias on December 26 from 10:00 a.m. to 12 noon in the circular drive at the Sanctuary entrance.



SUNDAY SERVICES

DECEMBER 20, 2009

MISSION MOMENT
Fourth Sunday of Advent

8:30 a.m.

10:30 a.m. Chancel Choir

Scripture:

Micah 5:2-5a, Luke 1:39-45

Sermon:

"Pregnant with Expectation"
Rev. Dr. Howard Roberts

DECEMBER 24, 2009

CHRISTMAS EVE

Family Christmas Eve Service

4:30 p.m. "Promises Kept"

Rev. Sally Iberg

Music- Intergenerational Choir &
Children's Choir

Meditative Christmas Eve Service

7:30 p.m. "Home is Where?"

Rev. Dr. Howard Roberts
Communion Offered

**Celebrative Service of Music, Scripture &
Meditation**

11:00 p.m. "Home is Where?"

Rev. Dr. Howard Roberts
Music: Festival Choir

DECEMBER 27, 2009

9:30 a.m.

Choral Singing

Scripture:

Isaiah 9:2-7, Luke 2:1-14a

Sermon:

"Member of the Empire"
Rev. Dr. Howard Roberts

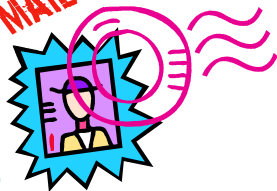
Weather Policy

With the recent reminder that winter has arrived here is a reminder of the policy for closing the building due to weather conditions. Glenview Community Church building will be closed for activities due to snow or ice if District 34 Public Schools are closed. This involves the Resale Shop, Glenview Community Church Nursery School, and meetings scheduled in the building during the day and/or evening. Staff members are to take safety precautions in getting to work. Should weather conditions cause delay or make it impossible for staff members to report for work, they are to communicate their situation to their supervisor. In the event of severe wintry conditions, the Senior Minister in consultation with the Facility Manager and the Moderator will determine appropriate action in closing the church office. Access to the building will be the West Entrance if a facility staff member is present.

Regarding Sunday worship, decision will be made on a case by case basis by the Senior Minister in consultation with the Facility Manager and the Moderator. Every effort will be made to conduct worship services. On severe weather days building entry will be through the West Entrance. Due to the difficulty of communicating cancellation of worship services in a timely manner, only in the most severe wintry weather conditions of excessively deep snow and/or blizzard like conditions will worship services be cancelled. In such a circumstance, Board Chairs will be called and asked to call their board members and board members will be asked to call friends and acquaintances they know to communicate that worship services are cancelled. If worship services are cancelled, local media will be contacted to assist communicating this information.

In the event of a closing, when possible an e-blast will be sent to the list we have on file. The message on the telephone will reflect the current situation.

FIRST CLASS MAIL



First Class Broadcaster Mailing

If you would like to have the Broadcaster mailed to you First Class, please return a check to the office marked "First Class Broadcaster Mailing" in the amount of \$22.00. The deadline is December 31, 2009.

Stewardship Campaign

As an update for the 2010 campaign, we have received 469 pledges for a total of \$959,806 - that's an increase of 9.22% from 2009. Through this outpouring of generosity, we, as a congregation, continue to show faith in this church and provide a means for this institution to remain firm and committed in growing a strong faith community.

We thank you for your love and commitment to Glenview Community Church. We also welcome those of you who have not responded yet to this campaign and look forward to hearing from you.

It has been a privilege to be a part of this journey with all of you so far this year - and we thank you for the trust and confidence you have given our board in carrying out this important campaign for our church. We look forward to communicating to you as a congregation throughout the rest of this church year with exciting new events you can participate in to continue opportunities for growth and development at GCC.... stay tuned!

- The 2010 Stewardship Board



Health Screening

Have you suffered a broken bone in your hip or spine? Do you feel as if you are getting shorter? If you answer "yes" to either of these questions, you may want to consider being screened for the risk of osteoporosis. We are pleased to offer a Life Line Screening preventive health event that can be used to detect just such a risk. Life Line Screening uses a quantitative ultrasound bone densitometer, using the heel as a measurement site, to assess one's risk of osteoporosis. This screening compares your bone density to that of the average 20-year-old adult female, according to World Health Organization guidelines. The osteoporosis screening is not only for women. Of the 10 million Americans who have been diagnosed with osteoporosis, 2 million are men.

PRE-REGISTRATION REQUIRED

To register please call Your Health is in Your Hands at 1-888-653-6441 or for more information.

The screening will take place on Tuesday, January 12, 2010.

REGISTRATION GCC Nursery School

The 2010-2011 school year is underway!

Registration dates are:

IN-HOUSE Lottery Deadline
January 13, 2010 - 9:00 a.m.

OPEN HOUSE
January 20, 2010 - 11:00 a.m. - 1:00 p.m.

OPEN LOTTERY Deadline
February 3, 2010 - 9:00 a.m.

Please check out our website at www.gccns.com for more information. You can also contact Marcia Kiraly to schedule a tour of the school by calling (847)729- 1440 or email Marcia at marciak@gccucc.org.



"Friends"

Below is a distribution list of funds that the Social Services Committee of the GCC Women's Association allocated to our Church supported agencies for 2009-2010. All funds come to us through the Resale Shop to which we are very grateful! Let's ALL keep shopping and donating to the Resale Shop! Any questions? Call Colleen MacKimm-GCCWA Social Services Chair.

By the Hand Club for Kids \$3,500
www.bythehand.org
Good News Community Kitchen \$2,000
www.gnck.org
Helping Hands of Glenview \$500
www.helpinghandsglenview.org
Journeys from PADs to Hope \$2,500
www.padstohope.org
Leap Learning Systems \$1000
www.leaplearningsystems.org
Minister's Discretionary Fund \$500
GCC Mission Tree \$500
The Night Ministry \$5,000
www.thenightministry.org
Northfield Food Pantry \$500
Northside Housing and Supportive Services \$3,250
www.lakeviewshelter.org
Onward House \$4000
www.onwardhouse.org
Prison phone cards \$200
San Lucas Iglesia UCC \$3,500
Self Help Closet and Pantry of Des Plaines \$500
www.selfhelppantry.org
Special Gifts Theatre \$250
www.specialgiftstheatre.com
Youth Services of Glenview/Northbrook \$3,500
www.youthservices-gn.org

Pilgrim Youth Fellowship Mission Trip

June 13 – 18, 2010

Pilgrim Youth Fellowship Mission Trip

This year PYF is headed to Booneville, Arkansas in the Ozarks. We will once again work with Youth-Works. This is a great way for youth to serve others and learn great things about themselves at the same time. The deadline for the deposit of \$50 is January 3rd. The total cost is \$320. Please contact elizabeth.cicolini@gccucc.org with questions or send/ bring the deposit by the church and place it in Elizabeth's box.

ABOUT THE TRIP:

The Ministry

We focus on two primary areas of ministry: children and home improvement. Our work with children consists of a wonderful hands-on program led by our youth, known as Kids Club. Kids Club offers high-energy games, crafts, skits, songs and interactive

lessons all designed to help kids learn about Jesus. Also during the week, our group will have the opportunity to do home improvement. Participants will do two days of home improvement, and two days of ministry with children, so that everyone has the opportunity to do both. Adult leaders will separate youth into ministry groups, and the youth in our group will be mixed with the youth from other groups for their week of service.

The Activities

Evening activities during a Youth-Works week are designed to give participants an insight into the lives of local residents and the culture of the area. A list of evening/ cultural activities we have done in the past include: visit Mt. Magazine and Cove Lake, attend a local church service, spend the evening swimming at a local pool."



Help Warm Hearts and Bodies with the GCC Mission Tree Collection on December 20.

GCC is collecting cold weather items for the mission tree: gloves, hats, socks, etc. for distribution through The Night Ministry. The items can be sized for children or adults so this is a great opportunity to involve the whole family in providing for the needs of those served by The Night Ministry. When you drop off your items or make a donation at the Mission Tree display in the Mayflower room, please take an ornament to add to your decorations at home. Thank you from your friends on the GCC Missions Outreach Board.

ORDER FORMS

Easter Lilies & Altar Flowers

The church office is now accepting orders for Easter Lilies and Altar flowers. The forms are available in the Narthex, West Entrance, church office and on our website at www.gccucc.org. Please return the order forms to the church office to be processed.

Intergenerational Choir Calling All Singers ...

Come one and come all to sing with the Voices of GCC during the 4:30 p.m. Christmas Eve service. Come join this Intergenerational Choir for one practice on Sunday, December 20 from 4:00 p.m. to 5:00 p.m. in the room 201. We will learn the anthem and the choral responsibilities for the service. We will meet again on Christmas Eve, Thursday, December 24, in the choir loft at 3:15 p.m. and then sing at the 4:30 service. Music will be available ahead of time if you would like it. Just contact Debby Shellard at (847)657-1202 to get a copy.



The 16th Annual A Toy-Ful Celebration Holiday Concert TOYS FOR TOTS

The Toy-ful Celebration Concert, to benefit the U. S. Marine Corps Reserves Toys for Tots campaign, will wrap up the holiday season of giving on Saturday, December 19th at 7:00 p.m. in the Sanctuary. The concert is filled with the music of the holiday season and is FREE to the public, but in the spirit of giving, we ask that you consider bringing NEW, UNWRAPPED TOYS to the concert to donate at the door and help the Marines raise toys for underprivileged children. This

year, The Voices of GCC kids choir will join us in an evening filled with holiday magic, music and the wonderful opportunity to do something good this holiday season! It'll warm your heart! Bring your family and friends, but most of all— BRING SOME TOYS! For information, call (847)724-2210. Toys may also be dropped off at any of the Glenview Fire Stations from now through Dec. 19th!

PYF

DECEMBER 20
Youth Room,
4-6 p.m.

PYF White Elephant
Gift Exchange,
Christmas Party &
Letter Writing



This year we will again trade our "treasures" and enjoy time for fellowship before Christmas. We will also write letters to Servicemen who will be away from their homes for Christmas. Join us for this wonderful tradition.

Leadership is Seeking

The Leadership Committee seeks nominations for volunteers to serve as Vice Moderator and At-Large Members on the Executive Board for the 2010-2011 church year.

Their volunteer responsibilities can be summarized as follows:

Vice-Moderator-This is the second highest elected lay officer of the Church. This person performs the duties of the Moderator when the Moderator is unable to serve and serves as the Chair of the Leadership Committee.

At-Large Members to the Executive Board: In addition to your responsibilities as a member of the Executive Board for two years, you will also serve on either the Leadership Committee or Personnel and Ministerial Relations Committee.

If you are interested in one of these positions or want to recommend someone else, please contact Lloyd Bettis, Chair of the Leadership Committee for further information on the responsibilities and requirements. He can be reached by email at lbettis@nationalbureau.com or by phone during the day at (312)861-4272.



Looking for the Best Christmas Gift you can give?
Women's Winter Retreat January 30-31, 2010

Attention: Spouses, children, parents etc.

Wonder what to give that special woman in your life? We have the answer! Give her a time away that she will remember forever. Let her experience rest and relaxation, with delicious meals and a chance to "get away" or be with others, AND an opportunity to hear Jo Giarrante, Spiritual Director and Supervisor at the Institute for Spiritual Leadership present "Sanctuary of the Heart". The theme is to explore the messages from our hearts that yearn for a safe place to rest, to be noticed, and to be honored. We're going back to the Chicago Marriott Suites in Deerfield. What more could any woman want??

Sign up today as space is limited! Registration forms available in the church office, narthex, and on line. Questions? Call Marilyn at (847)724-2210 ext. 30.

The Church Relations to its Pastor in the United Church of Christ

THE MINISTRY

This local church recognizes itself as a part of the people of God and fulfills its purpose as it becomes a community for ministry and mission. We recognize our pastor as a person called by God who has attained particular skill and competence in leading our local church in fulfilling its mission and ministry.

We have called our pastor to preach and teach the gospel, to administer the sacraments and rites of the Church, and to exercise pastoral care and leadership. As we expect the pastor to be responsible in preaching and teaching the gospel and in administering the sacraments and rites, so will we be responsible for receiving and heeding the Word of God that comes through the proclamation of the gospel and the celebration of the sacraments and for responding to the pastoral care and leadership offered.

PARTNERSHIP IN MINISTRY

We believe that the ministry and mission of the Church are given to all baptized Christians. We will nurture and join our gifts for ministry with those of the pastor in the Church and in the world.

In all matters pertaining to the life, organization, and mission of this local church, we will work cooperatively and collegially with the pastor.

We recognize that our church and our pastor are part of the larger faith community that is the United Church of Christ, and we will be and will support our pastor in being responsible participants in our Association, the Conference, and the United Church of Christ.

We recognize that our church and our pastor are part of the Church Universal, and we will be and will support our pastor in being responsible participants in ecumenical activities in order to strengthen the unity, witness, and mission of the Church everywhere.

THE ETHICS OF MINISTRY

We will regard all persons with equal respect and concern and will support and expect our pastor to undertake to minister impartially. We will not discriminate against any person, group or organization on the basis of race, gender, age, sexual orientation, faith, nationality, ethnicity, marital

status, or physical, mental, or emotional disability.

We recognize that we have called our pastor as the pastoral leader of this local church, and we will not invite other pastors to provide pastoral services within this church or to members of this church without our pastor's consent.

We recognize and respect that our pastor receives confidential and privileged communication.

We will establish policies regarding baptism, communion, marriages, funerals, and the use of church facilities and personnel in consultation with our pastor and will honor them in our life as a local church.

We respect the privacy of the pastor's family and the family's right to time together without interruption.

We do not expect the pastor's family to assume roles of leadership or levels of involvement beyond the family's wishes.

We recognize that conflict or tension between our pastor and the local church can arise. Should divisive tensions threaten our life together, we will seek the counsel of the Conference or Association Minister or the Association Committee on the Ministry.

COMMITMENTS IN MINISTRY

We recognize the many and diverse expectations we have of our pastor, and we will offer our support through prayer, encouragement, and partnership in the ministry of this church.

We recognize our responsibility to provide our pastor with adequate compensation and fringe benefits. We will make these decisions in consultation with our pastor and in light of the compensation guidelines established by our Conference. We will provide for an annual review of compensation that considers effectiveness, cost of living, ministerial competence, and years of service.

We recognize our pastor's need for physical and spiritual renewal, and we will provide adequate time and resources for study, devotion, leisure, vacation, and sabbatical.

Relying on the grace of God, we will lead lives worthy of the calling to which we have been called.

GCC Christmas Offering

The Night Ministry and Community Renewal Society

During this Advent season, as we prepare to celebrate the arrival of Jesus, let us also take time to reflect on his teachings and come together in support of the 2009 Christmas offering for The Night Ministry and Community Renewal Society.

Only donations put in the special Christmas envelope or checks noted with "Christmas offering" will go towards this special collection. Please be generous in your giving.

Please read the information below (taken from each of the agency web sites) to learn more about these two important organizations:

Every month, The Night Ministry serves hundreds of individuals ... all ages, races, religions, sexual orientations, economic and educational backgrounds. The basis for all programs includes non-judgmental listening, caring support, and connecting people with resources to empower them to change their lives for the better. We serve youth and adults who face multiple complex challenges on a daily basis, including homelessness, poverty, abuse, loneliness, and neglect. (www.thenightministry.org).

The Community Renewal Society empowers people to build just communities by working to eradicate racism and poverty. It does so by informing, organizing, training, and encouraging individuals and communities in sustained and strategic efforts to engender systemic change. The vision of Community Renewal Society is of a just community where race and class no longer limit each person's full participation in all aspects of society (www.communityrenewalsociety.org).

RESALE SHOP SPECIALS!

The GCC Women's Association Resale Shop has an inventory of St. John knits and vintage coats available for sale. These would be an excellent purchase for the holidays and winter season. Proceeds go to support many service organizations, ministries and missions. You need not be a member of the Women's Association to volunteer at the shop. If you are interested in volunteering, contact Addy Ford at either (847)998-0906 or addyford@comcast.net.

Adult Education Seminar

IN THE CHAPEL AT 9:30 a.m.

December 20

The Adult Education Board welcomes Dr. Roberts as our speaker on December 20. He will present some of his thoughts on the life and times of people in Israel when Mary and Joseph traveled to Bethlehem. Following his remarks, there will be time for questions and discussion on this timely subject. Please join us for some insight into the world that welcomed Jesus so long ago. Adult Education meets at 9:30 a.m. in the Chapel.

Equal Exchange Products Great for the holidays!

Our broad selection of coffee, teas, cocoa and snacks will be on sale during both fellowship hours on December 20th. These items are also attractively packaged in baskets for holiday giving. With your purchase, you are supporting a small-scale farmer to have a better life for his family and education for the children. This helps to break the cycle of poverty and preserve the land and environment for future generations. All items sold are organically grown and processed. Chapter 8 thanks you for your generous support of this program.



Greater Chicago Food Depository Work Session

JANUARY 9

Greater Chicago Food Depository/GCC Afternoon Work Session, **open to ages 13 and up**. Please join friends from GCC as we go down to the Greater Chicago Food Depository (www.chicagosfoodbank.org) for a work session on January 9, 2010. We will leave GCC at 12:30 p.m. and should be back by 5:30 p.m. GCFD distributes more than 55 million pounds of food each year and frequent volunteer projects involve re-packaging bulk cereal or pasta, sorting bread or canned food donations, or cleaning produce. Please contact Tracy Sawires at esnstsms@hotmail.com or at (847)832-0063 with questions or to sign up.

Thank you from your friends on the GCC Missions Outreach Board.

In the Spirit of the Season...

What do you get for the person who has everything? Come to the Mayflower room on Sunday, December 20 and sponsor a blanket (or two or three...) for our sisters and brothers being served by The Night Ministry. For each blanket you sponsor, you can choose either a card or an ornament to take as a symbol of your commitment to helping those in need. The Night Ministry was created out of diverse religious traditions to build relationships with vulnerable youth and adults on the nighttime streets. Recognizing the uniqueness, dignity, and value of each person, we accept individuals as they are, in an affirming and compassionate manner. We call the larger community to the same mission (www.thenightministry.org).

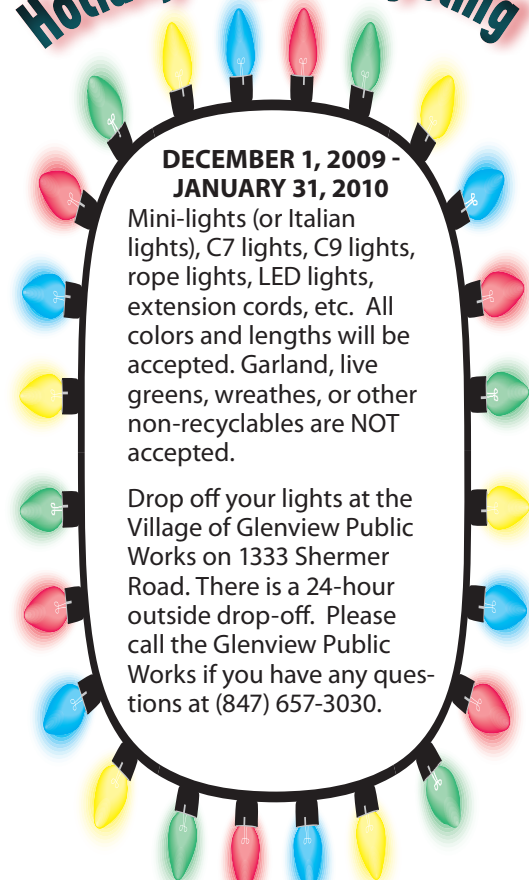
Thank you from Chapter 20 of the GCC Women's Association and the Missions Outreach Board.

Holiday Light Recycling

DECEMBER 1, 2009 -
JANUARY 31, 2010

Mini-lights (or Italian lights), C7 lights, C9 lights, rope lights, LED lights, extension cords, etc. All colors and lengths will be accepted. Garland, live greens, wreathes, or other non-recyclables are NOT accepted.

Drop off your lights at the Village of Glenview Public Works on 1333 Shermer Road. There is a 24-hour outside drop-off. Please call the Glenview Public Works if you have any questions at (847) 657-3030.



GLENVIEW COMMUNITY CHURCH

1000 Elm Street
Glenview, IL 60025-2897

Phone: (847) 724-2210
Fax: (847) 724-2213
E-mail: gccucc@gccucc.org

Not for profit Organization
US POSTAGE PAID
Glenview, IL
Permit NO. 41

Office Hours

Monday - Friday
8:30 a.m. - 4:30 p.m.

Ministerial Staff

Rev. Dr. Howard Roberts, *Senior Minister*
Rev. Dr. Pamela Keckler, *Minister for Spiritual Formation*
Rev. Sally Iberg, *Minister for Mission and Ministry*

Directors:

Marilyn Belleau, *RN, Health Ministry*
Kathy Lifton, *Children's Ministry*
Elizabeth Ciccolini, *Youth Ministry*
Debby Shellard, *Children's Choirs*
Gary Wendt, *Organist, Instrumental Music*
Andrew Lewis, *Adult Choir*

Affiliates:

Marcia Kiraly, *Director, GCC Nursery School*
Barbara Thewis, *Manager, Resale Shop*

At A Glance

| | | | | |
|--------------|---|---|---------------|---|
| Thu 12-17 | 9:00 am 6:15 pm 7:00 pm 7:30 pm | Resale Shop open until 5:00 p.m., Plymouth Rm Bell Choir, Bell Rm BSA 156 Meeting, Gym Chancel Choir, Sanctuary | Mon 12-21 | No Meetings Scheduled |
| Fri 12-18 | 9:00 am 6:00 pm 8:00 pm 8:00 pm | Resale Shop open until 1:00 p.m., Plymouth Rm Girl Scout Meeting, Founders Rm AA, Parlor Al-Anon, Rm 201 | Tues 12-22 | No Meetings Scheduled |
| Sat 12-19 | 9:00 am 9:00 am 7:00 pm | Resale Shop open until 1:00 p.m., Plymouth Rm Men's Open Gym, Gym A Toy-ful Celebration, Sanctuary | Wed 12-23 | No Meetings Scheduled |
| Sun 12-20 | 9:15 am 9:30 am 9:30 am 9:30 am 9:30 am 9:30 am 9:45 am 10:30 am 10:30 am 11:30 am 4:00 pm 4:00 pm | Fellowship Hour, Mayflower Rm Adult Education, Chapel Confirmation Opening Prayers, Plymouth Rm 7th Grade Confirmation Class, Various Rms 8th Grade Confirmation Class, Youth Rm Fellowship Board, Rm 213 Primary Choir, Rm 201 Poinsettia Fiesta, Plymouth Rm Puppet Group Christmas Party, Youth Rm Fellowship Hour, Mayflower Rm PYFF, Youth Rm Voices of GCC & intergenerational choir, Rm 201 | Thur 12-24 | 4:30 pm Family Christmas Eve Service 7:30 pm Meditative Christmas Eve Service 11:00 pm Celebrative Service of Music, Scripture & Meditation |
| | | | Fri 12-25 | Christmas Day Building Closed |
| | | | Sat 12-26 | Building Closed |
| | | | Mon 12-28 | Building Closed |

**The last Broadcaster for 2009 will
be issued on December 23.**

Broadcaster Deadline

Please submit all articles by 9:00 am, Wednesday, one week in advance to publishing via e-mail at tania.mccarthy@gccucc.org